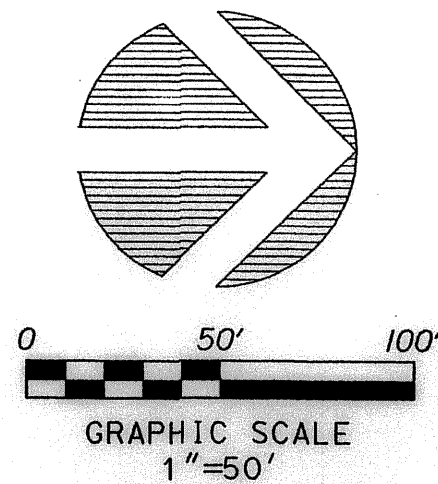


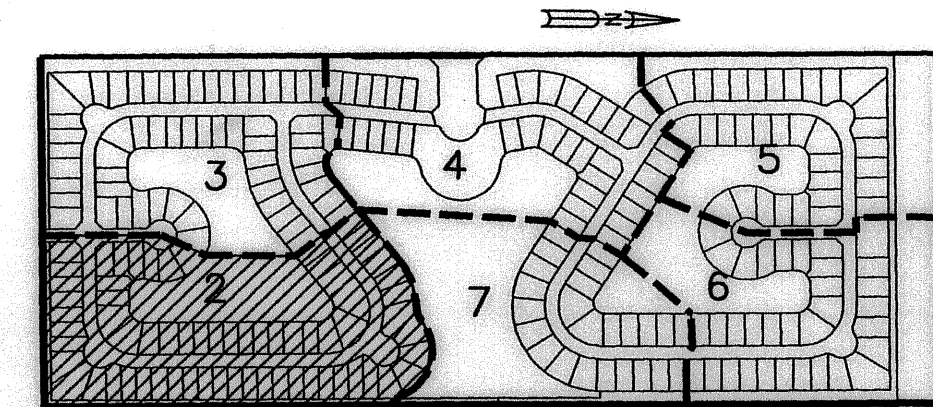
PERIMETER
 SURVEYING & MAPPING
 Certificate of Authorization No. LB7264
 Prepared by: Jeff S. Hodapp, P.S.M.
 951 Broken Sound Parkway, Suite 320
 Boca Raton, Florida 33487
 Tel: (561) 241-9988
 Fax: (561) 241-5182



COUNTRYSIDE MEADOWS

PETITION NO. 2003-035 (COUNTRYSIDE MEADOWS AGR-PDD)
 A REPLAT OF TRACT A OF WEST BOYNTON FARMS PLAT (P.B. 104, PGS. 9 - 11, P.B.C.R.)
 IN SECTION 20, TOWNSHIP 45 SOUTH, RANGE 42 EAST,
 PALM BEACH COUNTY, FLORIDA.
 NOVEMBER, 2004

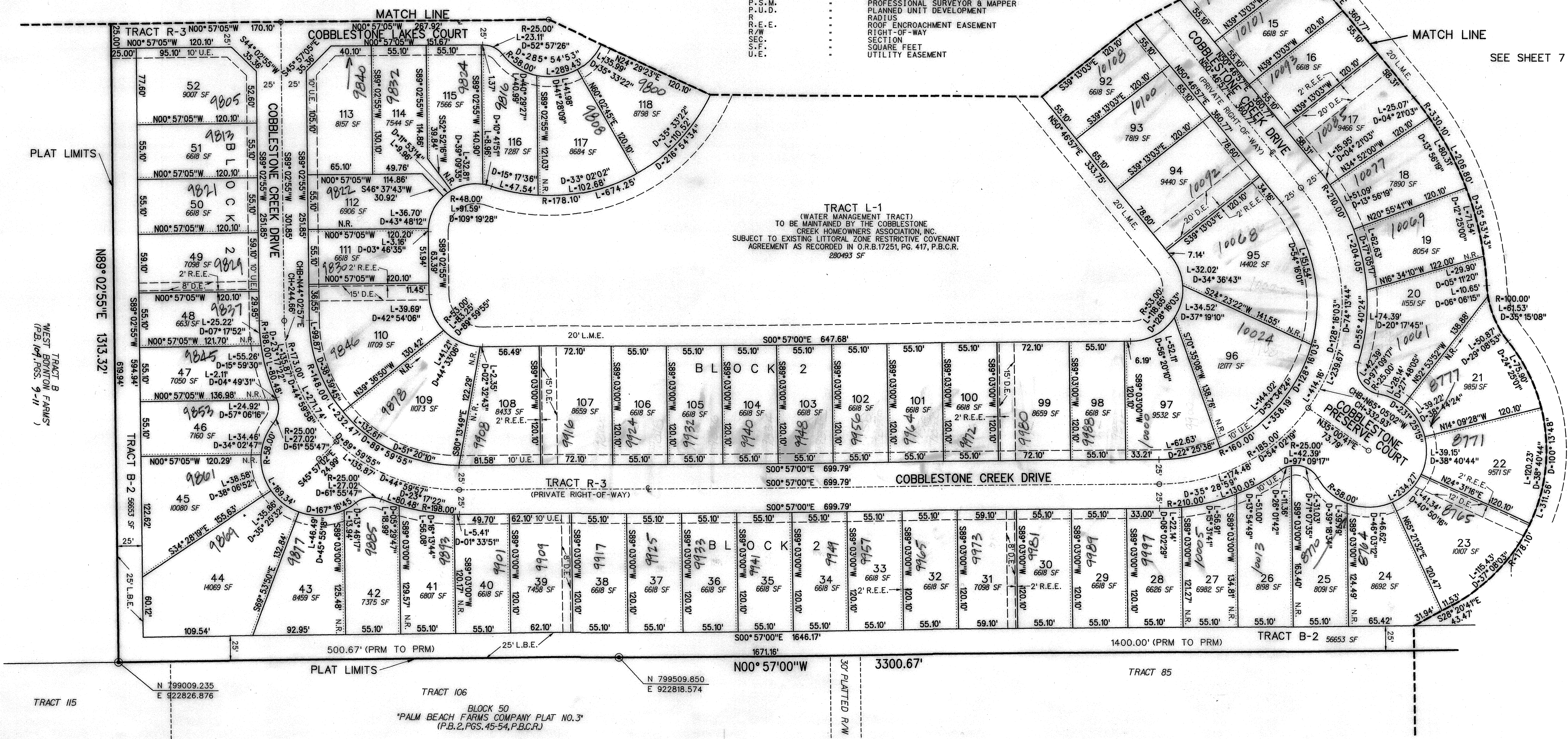
- ABBREVIATIONS:**
- CH CHORD
 - CHB CHORD BEARING
 - CONC. CONCRETE
 - COR. CORNER
 - D DELTA (CENTRAL ANGLE)
 - D.E. DRAINAGE EASEMENT
 - L. ARC LENGTH
 - L.B. LICENSED BUSINESS
 - L.E. LANDSCAPE EASEMENT
 - L.M.E. LAKE MAINTENANCE EASEMENT
 - L.M.A.E. LAKE MAINTENANCE ACCESS EASEMENT
 - L.S. LICENSED SURVEYOR
 - L.W.D.D. LAKE WORTH DRAINAGE DISTRICT
 - MON. MONUMENT
 - O.R.B. OFFICIAL RECORDS BOOK
 - N.R. NON-RADIAL
 - P.B. PLAT BOOK
 - P.B.C.R. PALM BEACH COUNTY RECORDS
 - P.G. PAGE
 - P.C.P. PERMANENT CONTROL POINT
 - P.O.B. POINT OF BEGINNING
 - P.O.C. POINT OF COMMENCEMENT
 - P.R.M. PERMANENT REFERENCE MONUMENT
 - P.S.M. PROFESSIONAL SURVEYOR & MAPPER
 - P.U.D. PLANNED UNIT DEVELOPMENT
 - R.R. RADIUS
 - R.E.E. ROOF ENCROACHMENT EASEMENT
 - R.O.W. RIGHT-OF-WAY
 - SEC. SECTION
 - S.F. SQUARE FEET
 - U.E. UTILITY EASEMENT



- LEGEND:**
- SET P.R.M. (UNLESS OTHERWISE NOTED)-4" X 4" CONC. MON. WITH ALUMINUM DISK STAMPED P.R.M. • LB7264 P.C.P.
 - CENTERLINE

SEE SHEET 3

SEE SHEET 7



SUBDIVISION COUNTRYSIDE MEADOWS
 BOOK 104 PAGE 013
 FLOOD ZONE B FLOOD MAP # 185 A
 QUAD # 50 ZONING PDD
 SR ZIP CODE 33437
 TAZ 745
 PUD NAME West Boynton Farms

BLOCK 50
 "PALM BEACH FARMS COMPANY PLAT NO. 3"
 (P.B. 2, PGS. 45-54, P.B.C.R.)